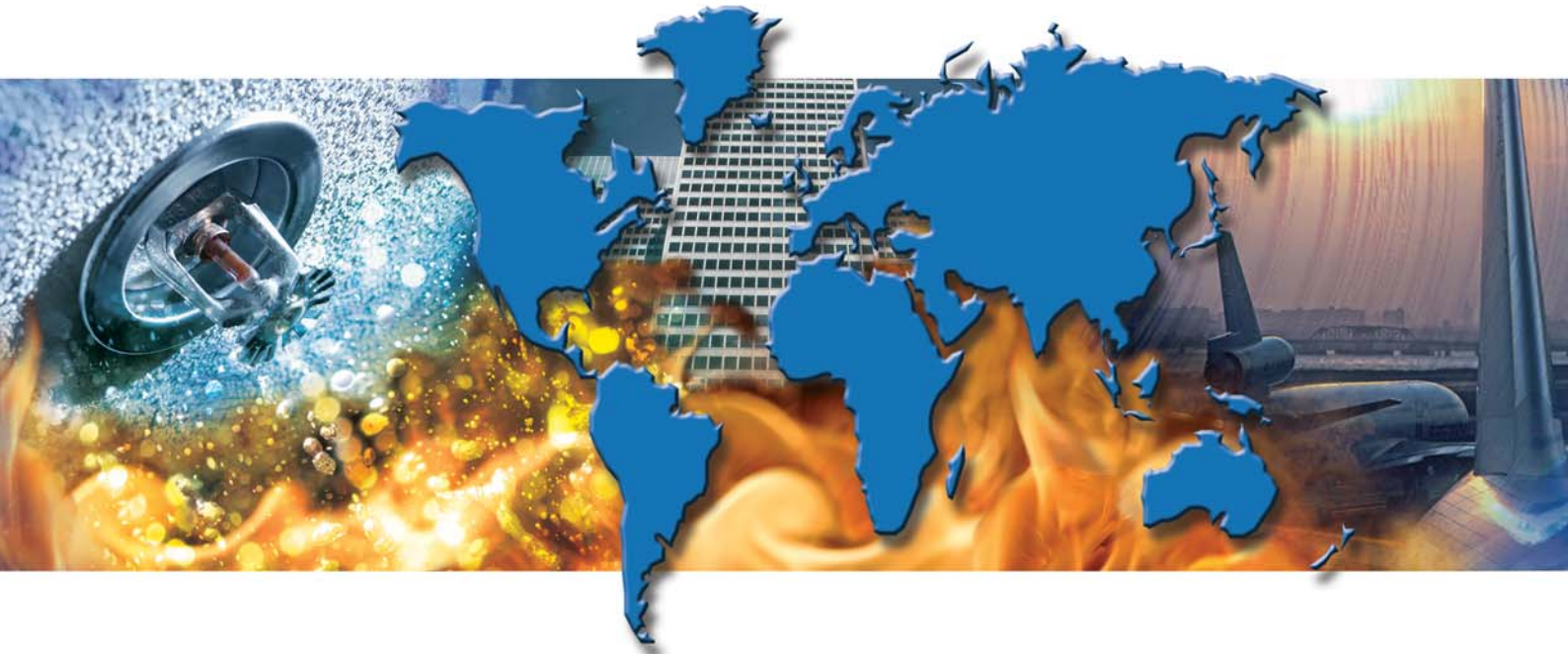
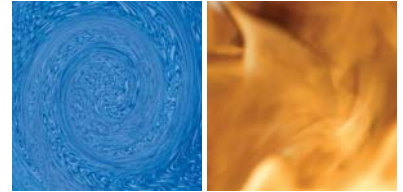


Split Case Pumps



The protection of life is not a matter for compromise.

This is particularly true for fire protection systems where they are only as strong as their 'weakest link' and compromise may result in avoidable loss of life or property.

That is why SPP fire pumps are designed specifically for the very particular needs of fire protection and are approved by most of the major fire protection bodies around the world.

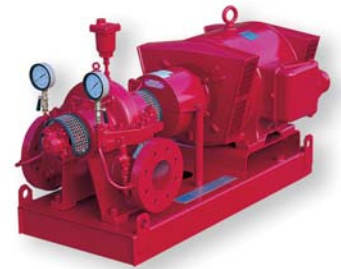
Fire Pump approvals are of course essential for the peace of mind of those that build, operate or use buildings. The approval demonstrates that an independent assessment has been made of the Fire Pump Manufacturer's packages and processes and that they conform to industry standards.

Split Case Fire Pumps

SPP Pumps have been manufacturing fire pumps for over 100 years and has one of the widest ranges of approvals of any manufacturer in the world. Experience gained from extreme environments such as off-shore oil & gas installations has led to the creation of the SPP Thrustream and Hydrostream range of split-case fire pumps, approved for fire protection by the Loss Prevention Certification Board (LPCB), Factory Mutual Approvals (FM) and Underwriter Laboratories Inc. (UL), all of which are fully compliant to NFPA 20. Other approvals held by SPP include APSAD, CNBOP, ZUS and PSB.

SPP Split Case fire pumps can be found in most types of installation around the world including:

- Office buildings
- Hospitals
- Airports
- Manufacturing facilities
- Power stations
- Pharmaceutical facilities
- Schools/colleges
- Warehouses



Typical Applications:

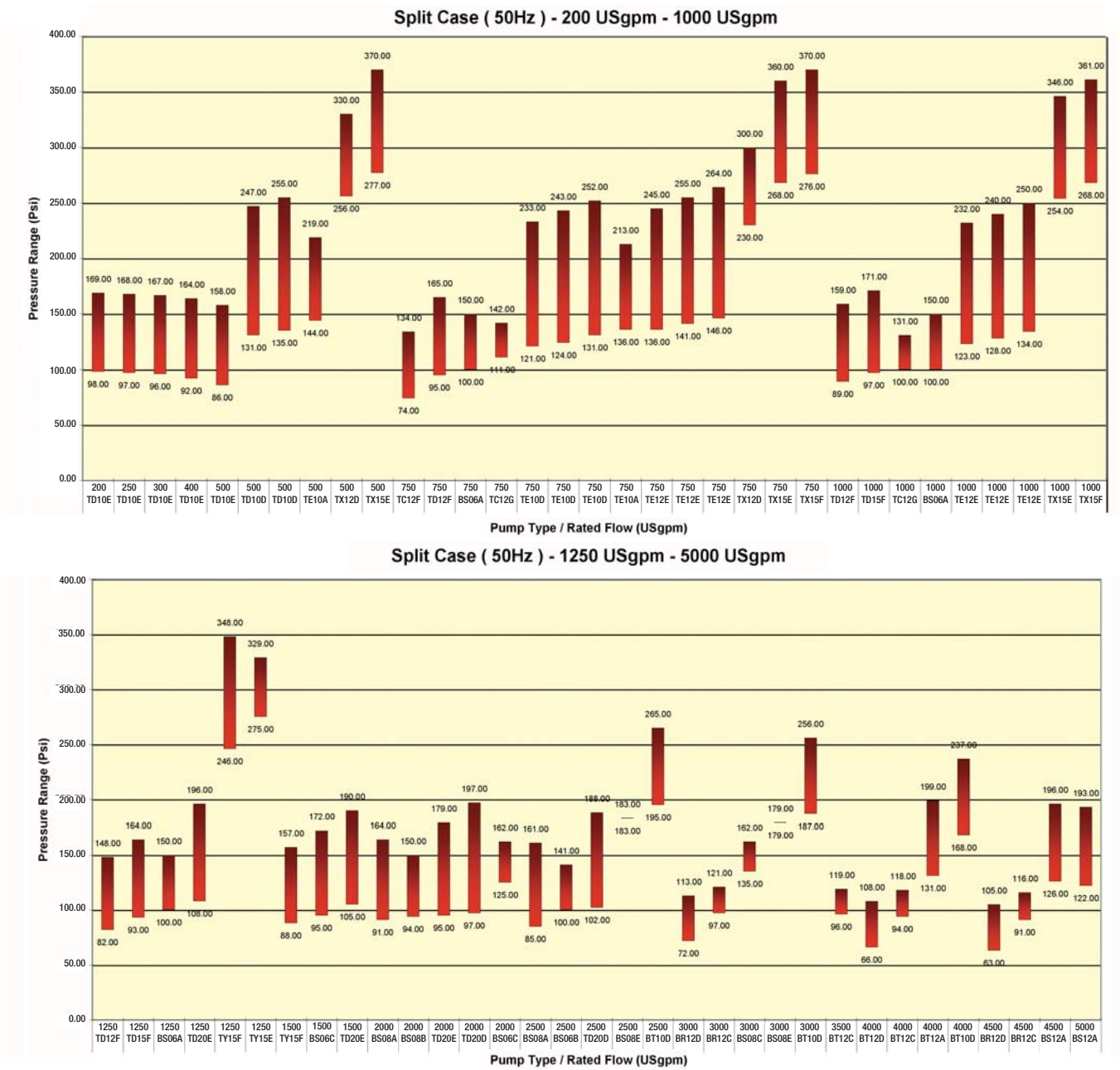
- Sprinkler systems
- Hydrant systems
- Deluge systems
- Monitor systems
- Water curtain



SPP PUMPS

SPP Split Case fire pumps are available for duties ranging from 200 USgpm to 5000 USgpm and are suitable for electric or diesel drives. The table below demonstrates how the range of Split Case pumps are designed to meet most normal requirements. SPP also supplies Vertical Turbine, End-Suction and Multi-Stage fire pumps. SPP Split Case pumps are available with either inch or metric fittings.

Examples of FM and UL Approvals up to 5000 USgpm



For detailed information on the LPCB range coverage please refer to the LPCB's List of Approved Fire and Security Products and Services (Red Book) or visit the website at www.brecertification.co.uk.

Due to frequent updates to the FM and UL range coverage, please refer to the following sources for up to date information:

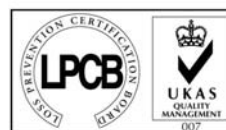
For FM listings please refer to the FM Approval Guide

For UL listings please refer to the UL website at www.ul.com

Controllers

To ensure total compatibility of equipment, controllers are manufactured or sourced by SPP. These can be Direct-On-Line, Star-Delta, Auto-Transformer, Soft Start, etc. Diesel controllers can be supplied for 12V or 24V DC electric, air or hydraulic cranking. Controllers can be supplied free standing or mounted on the baseplate, completely wired and connected into the pump set package. Remote alarm panels can also be supplied.

SPP reserve the right to continually develop and improve products. Information contained herein is for guidance only and subject to change. SPP Pumps Ltd accept no liability whatsoever for any damages either direct or consequential resulting from the use of such information



Assessed to ISO 9001:2000
Certificate No. 111



www.sppumps.com